

Watbox™

3200/3500 series

arcx
INDUSTRIAL

www.arcx.com

The Watbox™ logic controller is a high performance, flexible factory integration device that replaces separate HMIs, PACs, network interfaces, database gateways

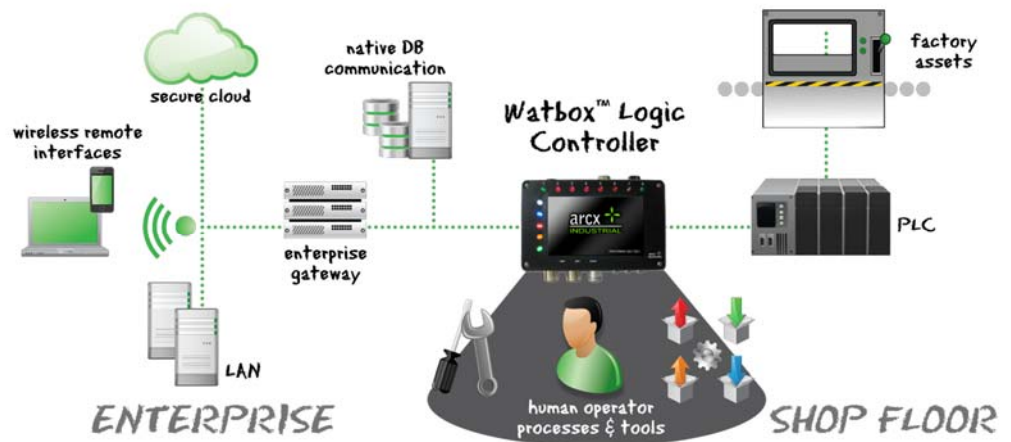


APPLICATIONS

- Advanced materials handling and replenishment
- Operator/tool assist (poka yoke)
- Automated device testing

FEATURES & BENEFITS

- Supports concurrent network protocols including Ethernet/IP, DeviceNet, FL-net, TCP/IP, Profibus and others
- Webservice communication with common database platforms
- Connect shop floor devices and business IT systems
- Remote management and troubleshooting via web browser on any device
- Bundled simulation software for pre-commission system design and testing
- Custom app development in JavaScript and XML using the Watbox API



Watbox™ logic controllers represent the next-generation of integrated automation control devices. Built on high-performance, open-platform industrial technologies, they replace more expensive systems that typically require separate HMIs, PLCs, network interfaces, database gateways and I/O. Using Ethernet/IP, DeviceNet, Profinet, Profibus, FL-net and other industry protocols, the Watbox™ provides reliable connectivity to a variety of common PACs, automation equipment, plus directly to database servers and business IT systems. Sensors, actuators, and tools connect to the extensive built-in I/O ports. The Watbox™ is easily programmed, using open standard languages, allowing for simple to sophisticated applications. Free or low-cost development tools allow for programming on the device directly, remotely, or on a PC with full simulation.

Technical specifications

Model #	AXM-UP32xx	AXM-UP35xx
Performance	4 Core ARM Cortex A9 (iMX6 QUAD) 1GHz max, 400MHz standby	
Memory	2 - 4Gbyte DDR3-1066, 16Mbyte NOR, 8 - 64Gbyte eMMC	
USER INTERFACE		
LCD	800x480 @ 16 bpp, 320nits, C/R 240	
TouchPanel	4wire resistive	
Optional Video Out 1	1080p60Hz	1080p60Hz
Audio Out	STEREO (opt)	STEREO (opt)
Audio In	STEREO (opt)	STEREO (opt)
Tricolor LEDs	8 tri-color LEDs , horizontally aligned	
Internal Stacklight	5 high brightness LEDs vertically aligned (red, yel, gm, wht, blu)	
HID Reader	Integrated 125KHz RFID Reader for Weigand badges	
INPUT / OUTPUT		
	MDC	TERMINAL BLOCK
24V Inputs NPN/PNP	16	16
Analog Inputs (0-10V)	4 *	4 *
24V Outputs NPN/PNP	16	16
Analog Outputs (0-10V)	-	-
Optically Isolated Inputs	2	2
Form C Relay Outputs	2	2
Ext. Stacklight Connection	5pin mini change (8pin optional)	
COMMUNICATION		
RS-232 Ports	4 x 9pin DSUB 115K Baud max	
PoE 802.3at	YES	YES
Ethernet 1	10/100/1000	10/100/1000
Ethernet 2	-	100Mb FLNET
CANbus	-	-
Fieldbus Protocols	EtherNet/IP	EtherNet/IP & FLNet
USB 2.0 Host	3	3
USB 2.0 OTG	Optional	Optional
PHYSICAL		
Power	24Vdc (8watts)	
Power Terminal	4pin mini change	
Power over Ethernet	802.3at	802.3at
Weight	7 lbs	7 lbs
Size	11" x 7" x 3.8"	
Temperature	Storage temperature: -40°C to +85°C Operating temperature: -5°C to +45°C Humidity: 40% non-condensing	
Vibration	5-17Hz, 0.1" double amplitude displacement 17-640Hz, 1.5G acceleration peak to peak	
Shock	10G (11ms) peak-to-peak acceleration	
Enclosure	IP61 powder coated Aluminum	IP41 powder coated Aluminum
NETWORK PROTOCOLS		
	EtherNET/IP Client&Server***, CIP***, FLnet, WEBSockets, TCP/IP, ProfiNet***, DeviceNet***, CC-Link ProfiBus***, ModBus***, OPC UA Nano profile	
WARRANTY		
	1 Year Limited	
SOFTWARE SUPPORT		
	<ul style="list-style-type: none"> Linux 4.1.15 Android 6.x WebKit, Qt, FlexframeUX, WAT 	

* Analog inputs the last 4 of 16 Inputs
 ** NPN or PNP is factory configured and reflected in the last four digits of the model number
 *** These Certified Protocol Stacks are provided by Real Time Automation

1-888-WWW-ARCX / 905 513-9160

sales@arcx.com

www.arcx.com

151 Amber Street, Markham, Ontario, L3R 3B3 Canada



32xx/35xx Top Panel Connections



35xx Bottom Panel Connections



32xx Bottom Panel Connections



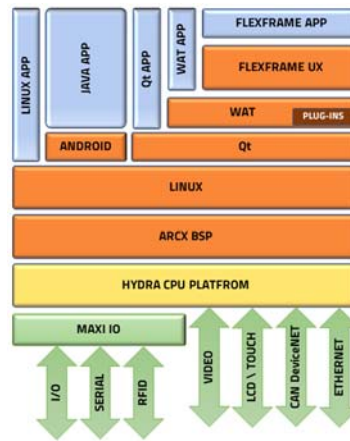
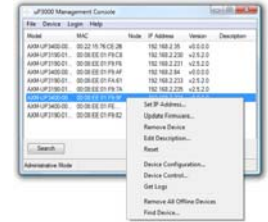
Watbox™

3200/3500 series

Watbox™ management and development tools

Configure and manage the connectivity of multiple units using the AxMC network device manager.

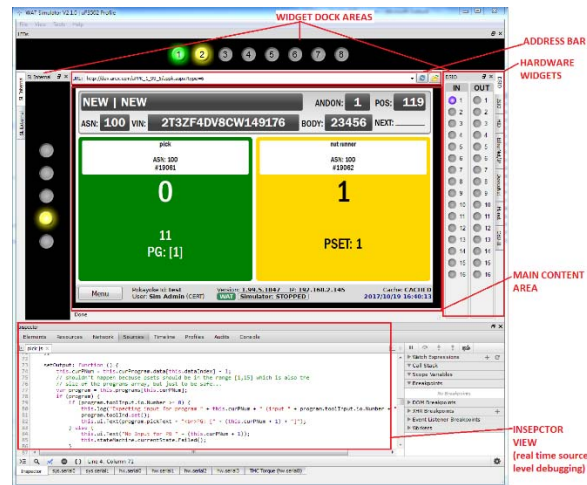
Remotely manage and troubleshoot via Chrome™ web browser on desktop or mobile device.



Multiplatform O/S allows for applications to be developed from low level C++ to Android applications to high level rapid applications using FlexframeUX.

Use the Watbox™ API to build custom apps using JavaScript and XML.

Simulate Applications using the WatSim™ development environment.



Ordering information

DESCRIPTION	PART
Automation Controller with integrated color-touch panel HMI, with EtherNET/IP, DeviceNET*, HID, integrated stack light, (2) 19pin minichange I/O Ports, (1) 10pin Isolated Auxiliary Port, (4) Dsub-9pin serial ports, and (1) HDMI Video out & (1) external audio out	AXM-UP3292-0973
Automation Controller with integrated color-touch panel HMI, with FLNet, DeviceNET*, EtherNET/IP*, HID, integrated stack light, (4) Dsub-9pin serial ports, and Terminal Block I/O: (2) 12-pin, (1) 6-pin isolated.	AXM-UP3502-0001
Automation Controller with integrated color-touch panel HMI, with DUAL FLNet, DeviceNET*, EtherNET/IP*, HID, integrated stack light, (4) Dsub-9pin serial ports, and (2) 19pin minichange I/O Ports, (1) 10pin Isolated Auxiliary Port, (4) Dsub-9pin serial ports and (1) HDMI Video out & (1) external audio out.	AXM-UP4032-0000
ACCESSORIES	
3 x color mini stacklight with integrated 5-pin mini MDC connector	AXM-UP2000-L000
Strain relief kit	AXM-UP3100-B004
6-hole aluminum mounting plate	AXM-UP3100-B001
120VAC in to 24VDC Power Supply (32W) for 3200/3500, with Cable	AXM-UP3000-C109