

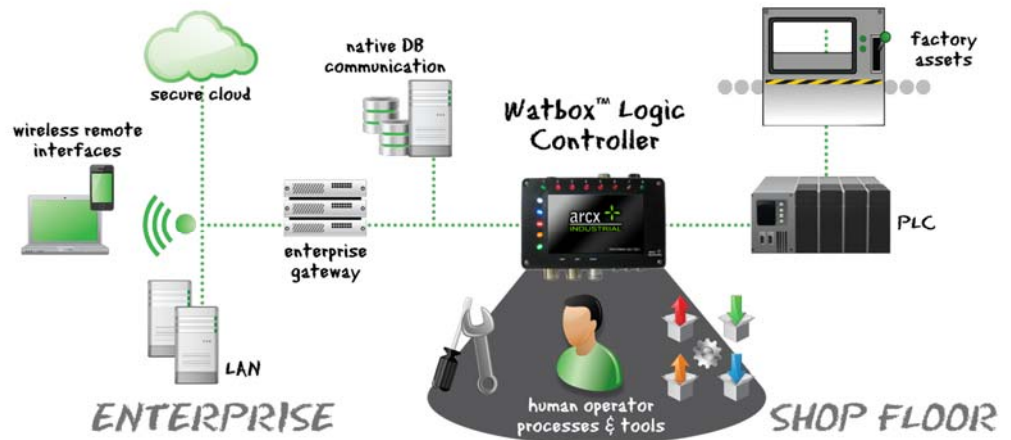
The Watbox™ logic controller is a high performance, compact, flexible factory integration device that replaces separate HMIs, PACs, network interfaces, database gateways and multiple I/O.

APPLICATIONS

- Advanced materials handling and replenishment
- Operator/tool assist (poka yoke)
- Automated device testing

FEATURES & BENEFITS

- Supports concurrent network protocols including Ethernet/IP, DeviceNet, FL-net, TCP/IP, Profibus and others
- Native communication with common database platforms
- Connect shop floor devices and business IT systems
- Remote management and troubleshooting via web browser on any device
- Bundled simulation software for pre-commission system design and testing
- Custom app development in JavaScript and XML using the Watbox API



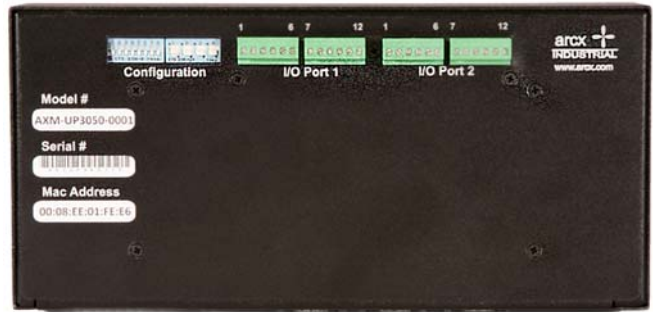
Watbox™ logic controllers represent the next-generation of integrated automation control devices. Built on high-performance, open-platform industrial technologies, they replace more expensive systems that typically require separate HMIs, PLCs, network interfaces, database gateways and I/O. Using Ethernet/IP, DeviceNet, Profinet, Profibus, FL-net and other industry protocols, the Watbox™ provides reliable connectivity to a variety of common PACs, automation equipment, plus directly to database servers and business IT systems. Sensors, actuators, and tools connect to the extensive built-in I/O ports. The Watbox™ is easily programmed, using open standard languages, allowing for simple to sophisticated applications. Free or low-cost development tools allow for programming on the device directly, remotely, or on a PC with full simulation.

Technical specifications

Model #	AXM-UP3062	AXM-UP3072
Performance	4 Core ARM Cortex A9 (iMX6 QUAD) 1GHz max, 400MHz standby	
Memory	2 - 4Gbyte DDR3-1066, 16Mbyte NOR, 8 - 64Gbyte eMMC	
USER INTERFACE		
LCD	800x480 @ 16 bpp, 320nits, C/R 240	
Touch Panel	4wire resistive	
Optional Video Out 1	1080p60Hz	1080p60Hz
Audio Out	STEREO (via HDMI)	
Audio In	-	
Internal Stacklight	5 high brightness LEDs vertically aligned (red, yel, gm, wht, blu)	
HID Reader	Integrated 125KHz RFID Reader for Weigand badges	
INPUT / OUTPUT		
24V Inputs NPN/PNP	4 *	4 *
Analog Inputs (0-10V)	2 **	2 **
24V Outputs NPN/PNP	-	-
Analog Outputs (0-10V)	2	2
Optically Isolated Inputs	2	2
Form C Relay Outputs	2 Form C, 1 Form A	
Ext. Stacklight Connection	5pin mini change (8pin optional)	
COMMUNICATION		
RS-232 Ports	3 x 9pin DSUB 115K Baud max	
PoE 802.3at	YES	YES
Ethernet 1	10/100/1000	10/100/1000
Ethernet 2	-	100Mb FLNET
CANbus/DeviceNET	5 PIN terminal block	
Fieldbus Protocols	EtherNet/IP	EtherNet/IP & FLNet
USB 2.0 Host	1	1
USB 2.0 OTG	1	1
PHYSICAL		
Power	24Vdc (7watts)	
Power Terminal	3pin Terminal Strip	
Power over Ethernet	802.3at	802.3at
Weight	4 lbs	4 lbs
Size	10" x 5" x 2"	
Temperature	Storage temperature: -40°C to +85°C Operating temperature: -5°C to +45°C Humidity: 40% non-condensing	
Vibration	5-17Hz, 0.1" double amplitude displacement 17- 640Hz, 1.5G acceleration peak to peak	
Shock	10G (11ms) peak-to-peak acceleration	
Enclosure	IP41 powder coated Aluminum	
NETWORK PROTOCOLS		
	EtherNET/IP Client&Server***, CIP***, FLnet, WEBSockets, TCP/IP, ProfiNet***, DeviceNet***, CC-Link ProfiBus***, ModBus***, OPC UA Nano profile	
WARRANTY		
	1 Year Limited	
SOFTWARE SUPPORT		
	Linux 4.1.15 Android 6.x WebKit, Qt, FlexframeUX, WAT	

* Inputs NPN or PNP are DIP SWITCH Selectable, these inputs are also analog inputs
 ** these analog inputs can be used for 0-10V or 4-20mA via DIP SWITCH selection
 *** These Certified Protocol Stacks are provided by Real Time Automation

30xx Back Panel Connections



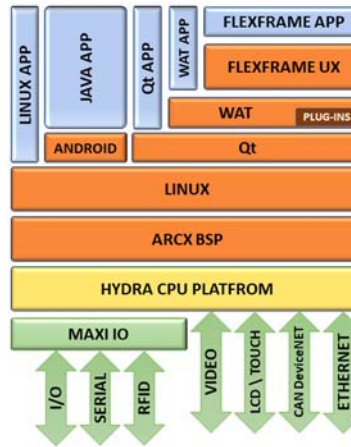
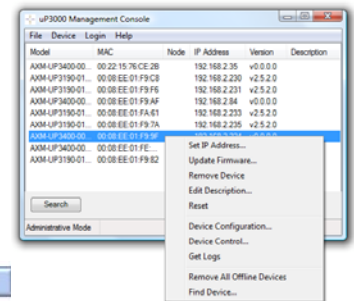
30xx Bottom Panel Connections



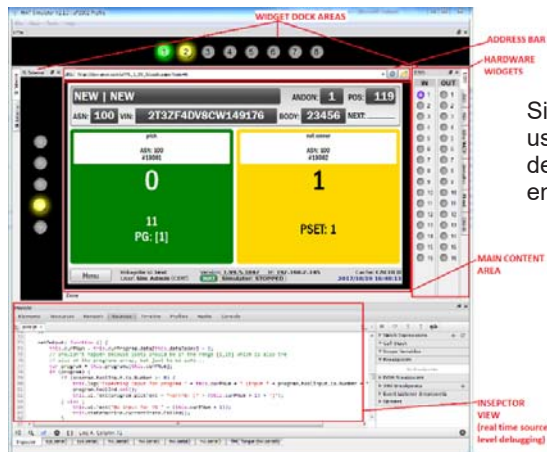
Watbox™ management and development tools

Configure and manage the connectivity of multiple units using the AxMC network device manager.

Remotely manage and troubleshoot via Chrome™ web browser on desktop or mobile device.



Use the Watbox™ API to build custom apps using JavaScript and XML.



Simulate Applications using the WatSim™ development environment.

Ordering information

DESCRIPTION	PART
Automation Controller with integrated color-touch panel HMI, with ENET/IP, mini digital & analog I/O Board, HID, integrated stack light, HDMI Video S/W option	AXM-UP3062-0001
Automation Controller with integrated color touchpanel HMI, FLNet, mini digital & analog I/O Board, HID, integrated stack light, HDMI Video S/W Option	AXM-UP3072-0001
ACCESSORIES	
UP30xx Mounting Bracket	AXM-UP30XX-B001
uP30X0 Power Supply & Cable; 120VAC to 24VDC (32W) barrel connector	AXM-UP3000-C110



1-888-WWW-ARCX / 905 513-9160

sales@arcx.com

www.arcx.com

151 Amber Street Unit 16, Markham, Ontario, L3R 3B3