



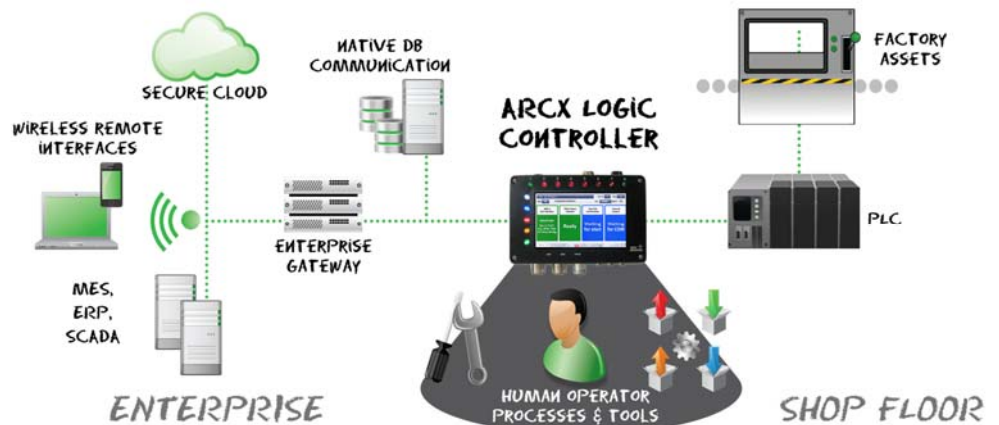
The Andon Controller is a high performance, flexible factory integration device that delivers a dual Andon display system. This lightweight and low-cost alternative supports multiple concurrent network interfaces, providing direct connectivity to factory floor process equipment and back office database servers without the use of additional software or gateways.

APPLICATIONS

- Advanced materials handling and replenishment
- Operator/tool assist (poka yoke)
- Andon Displays

FEATURES & BENEFITS

- Supports concurrent network protocols including Ethernet/IP, DeviceNet, FL-net, TCP/IP, MODBUS and others
- Native communication with common database platforms
- Connect shop floor devices and business IT systems
- Remote management and troubleshooting via web browser on any device
- Bundled simulation software for pre-commission system design and testing
- Custom app development in JavaScript and XML using the API



Andon Controllers represent the next-generation of integrated automation control devices. Built on high-performance, open-platform industrial technologies, they replace more expensive systems that typically require separate HMIs, PLCs, network interfaces, database gateways and I/O. Using Ethernet/IP, DeviceNet, FLnet, Modbus and other industry protocols, the Andon Controller provides reliable connectivity to a variety of common PACs, automation equipment, plus directly to database servers and business IT systems. Sensors, actuators, and tools connect to the extensive built-in I/O ports. The Andon Controller is easily programmed, using open standard languages, allowing for simple to sophisticated applications. Free or low-cost development tools allow for programming on the device directly, remotely, or on a PC with full simulation.

Technical specifications

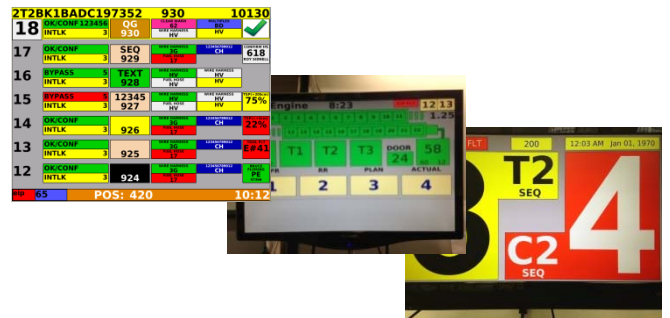


Model #	AXM-UP4022-00xx	AXM-UP4032-00xx
Performance	4 Core ARM Cortex A9 (iMX6 QUAD) 1GHz max, 400MHz standby	
Memory	2 - 4Gbyte DDR3-1066, 16Mbyte NOR, 8 - 64Gbyte eMMC	
USER INTERFACE		
LCD Touchscreen	-	-
Video Out 1	1080p60Hz	1080p60Hz
Video Out 2	1080p60Hz	1080p60Hz
Video Out 3	VGA	VGA
Audio Out	STEREO	STEREO
INPUT / OUTPUT		
Form C Relay Outputs	2	2
COMMUNICATION		
RS-232 Ports	-	-
RS-232/485 Ports	1 DSUB	1 DSUB
Hi Speed Serial	-	-
PoE 802.3at	YES	YES
Ethernet 10/100Mb	3 Port Switch	3 Port Switch
Ethernet 10/100/1000	1 (model -0030)	1 (model -0030)
CANbus	-	-
Fieldbus Protocols	EtherNet/IP	EtherNet/IP & FLNet
USB 2.0 Host	3	3
USB 2.0 OTG	-	-
WiFi (802.11)	-	-
Zigbee (802.15.4)	-	-
mPCIe	opt	opt
mSATA	opt	opt
PHYSICAL		
Power Barrel	120Vac	120Vac
Power Terminal	-	-
Power over Ethernet	802.3at	802.3at
Weight	1.8 lbs	1.8 lbs
Size	12" x 6" x 1.7"	
Temperature	Storage temperature: -40°C to +85°C Operating temperature: -5°C to +45°C Humidity: 40% non-condensing	
Vibration	5-17Hz, 0.1" double amplitude displacement 17-640Hz, 1.5G acceleration peak to peak	
Shock	10G (11ms) peak-to-peak acceleration	
Enclosure	1U Rack mountable IP41 Anodized Powder coated mild steel	
NETWORK PROTOCOLS	herNET/IP Client&Server*, CIP*, FLnet, WEBSockets, TCP/IP, ProfiNet*, DeviceNet*, CC-Link ProfiBus*, ModBus*, OPC UA Nano profile	
WARRANTY	1 Year Limited	
SOFTWARE	<ul style="list-style-type: none"> Linux 2.6.x WebKit under Qt/Embedded GStreamer for audio/video Real Time Automation CIP Stack 	

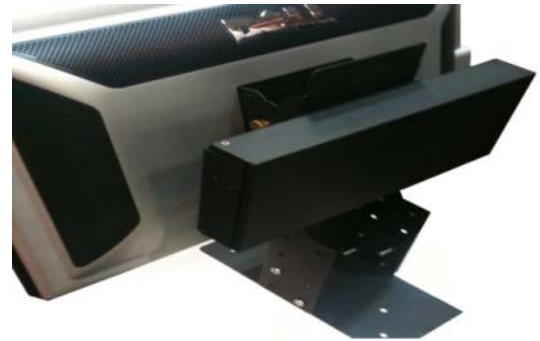
* These Certified Protocol Stacks are provided by Real Time Automation

Management and development tools

- Remotely manage and troubleshoot in a web browser, on desktop or mobile environments
- Run test configurations and simulations in the development environment
- Use the API to build custom apps using JavaScript and XML



Brackets available for direct mounting to VESA100 LCD Monitor.



Ordering information

DESCRIPTION	PART
UP4022 Web Based Logic Controller w/ dual-head HDMI video outputs, 1 VGA Video Output, and Integrated 3 port Switch, Audio Line IN/OUT support for Radio Interface, 4 GPIO, 120Vac powered	AXM-UP4022-0000
UP4022 Web Based Logic Controller w/ dual-head HDMI video outputs, 1 VGA Video Output, and Integrated 3 port Switch, Audio Line IN/OUT support for Radio Interface, 4 GPIO, 120Vac powered, HIGH PERF Heatsink and GigE port support	AXM-UP4022-0030
UP4032 Web Based Logic Controller w/ dual-head HDMI video outputs, 1VGA Video Output, FLnet and Integrated 3 port Switch, Line IN/OUT, 120Vac powered	AXM-UP4032-0000
UP4032 Web Based Logic Controller w/ dual-head HDMI video outputs, 1 VGA Video output, FLnet and Integrated 3 port Switch, Line IN/OUT, 4 GPIO, 120Vac powered, HIGH PERF Heatsink and GigE port support	AXM-UP4032-0030
ACCESSORIES	
ANDON Bracket Assembly with Chain Brackets	AXM-UP4002-B010
ANDON Bracket Assembly with Mounting Plate	AXM-UP4002-B011
UP4022 VESA Mounting Bracket KIT with Cable Strain Relief	AXM-UP4022-BK01
UP4022 19" Rack Mounting KIT with Cable Strain Relief	AXM-UP4022-BK02



1-888-WWW-ARCX / 905 513-9160
sales@arcx.com www.arcx.com
#16-151 Amber St, Markham, Ontario
L3R 3B3 Canada